

Tower® SPEEDSAFE

Anti-glare mobile
light in XXL

within 20 seconds



SPEEDSAFE®

Ihr Spezialist für Einsatzbeleuchtung

Speedsafe Tower

Speedsafe Tower is the result of numerous tests carried out in the aviation industry and allows for a wide-area and also network-independent lighting. The cylindrical robust structure made of special fabric is blown up with air setting up the light source high aloft and allowing the high illuminating power to light large areas. The light source consists of a halogen vapour lamp with up to 1000W and 95000 Lm which is set up at an operating height of 4.7 meters. For this, the fabric cylinder is blown up using compressors that are supplied by the integrated generator or- in case of the basic design - by the 230 V mains. In this manner, it is possible to illuminate an area up to 10,000m² large in less than 3 minutes and with total darkness. Thanks to its low weight and the compact dimensions, the Speedsafe Tower can easily be transported in the trunk of a car and the entire system can be set into operation by only one person.



With the Speedsafe Tower, a 360 degrees illumination is no problem.



The Speedsafe Tower has been successfully used by the highway patrol as an indispensable device for traffic checks, at the scene of serious accidents and for crime scene investigations. Of course, the Speedsafe Tower proved itself with fire brigades, the DLRG (German Lifeguard Association), THW (Federal Agency for Technical Relief), customs, SEK (German Special Police Forces) and the German Criminal Investigation Department.

Speedsafe Tower

Article no.: 992004 Dual



Speedsafe Tower

Dual supply

Speedsafe Tower Dual is the most versatile and most complete model whose independent generator with its compact and low noise motor allows the operation at all conditions.

The generator is highly versatile, with this design even more so as the system can be supplied via the 230V mains. A selector switch allows to select the energy source for the Speedsafe Tower Dual. With a simple hand movement, the operation of the system is switched from the generator operation to the 230V mains operation.

Speedsafe Tower

Article no.: 992002



Speedsafe Tower

Mains supply

This is a simplified design that allows the Speedsafe Tower to be used in locations where the 230V power supply is available either directly through the mains supply or through an external generator. In this case, several Speedsafe Towers can be used simultaneously in the same area with an external supply allowing to light large areas.

Technical data:

Supply: 230 V 50 Hz input 1200-1500 VA Maximum. Lights: 1000 W halogen vapour lamp, 95000 lumen. Electric motors: 2 pieces 80 W each, 230 V, 50/60 Hz Rotation: 15000 1/min. Protection class: IP 23

Technical data:

Lamp holder tube made of special fabric:
Height = 4200 mm • diameter = 400 mm
Operating height = 4720 mm

Motor (Speedsafe Tower Dual only)

Type = Robin EX 17 (D) - Version 1000 W
Output = 2.0 kW - 3000 rpm - 169 cm³
Fuel = lead-free gasoline
Tank = approx. 4,5 litres
Consumption = approx. 0.8 - 1.0 litres/hour
Noise level = 68 a dB (at a 7 m distance)

Generator (Speedsafe Tower Dual only)

Type = ES 80-B
Voltage = 230 V
Output = 2.2 kVA
Current 9.53 A
Design: synchronous, single-phase, brushless
Distortion factor ≤ 6%
Short-circuit current = 3In
IP 23
Compressor: 80 W x 2

Electric motors

2 pieces 80 W each • 230 V • 50/60 Hz
Rotation: 15000 1/min

Lamp

1000 W halogen vapour lamp • 95000 lumen

Dimensions:

Article no2004 Dual:
Aluminium support frame
570x440x640 mm 52kg
Article no.: 992002 mains supply:
570x440x520 mm 23kg

Tower® SPEEDSAFE

Speedsafe Tower Details



Weather-proof and heavy-duty protective cover



Stability of luminous post is always ensured by means of a telescopic bar and tensioning rope. (special accessories)



Easy and centralised control

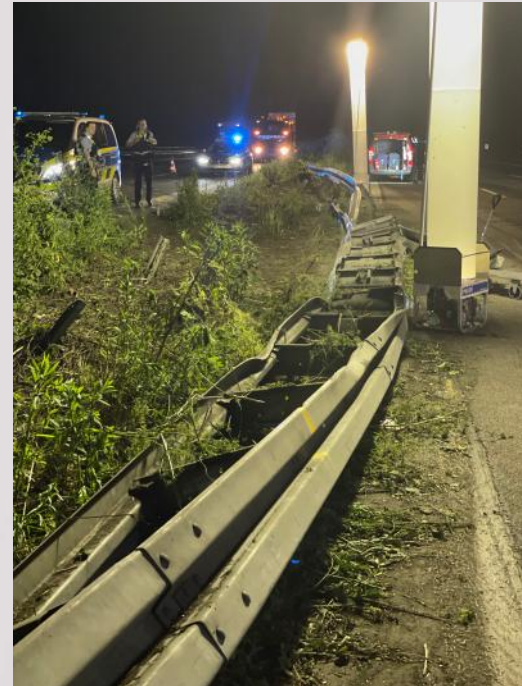


A stable aluminium support frame with carrying device



The Speedsafe Tower
Article no.: 992004

Speedsafe Tower in practice



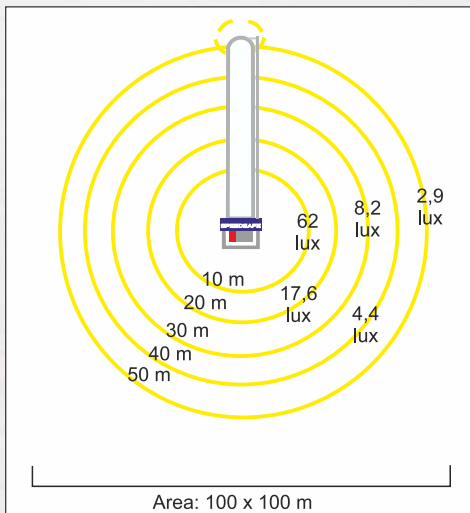
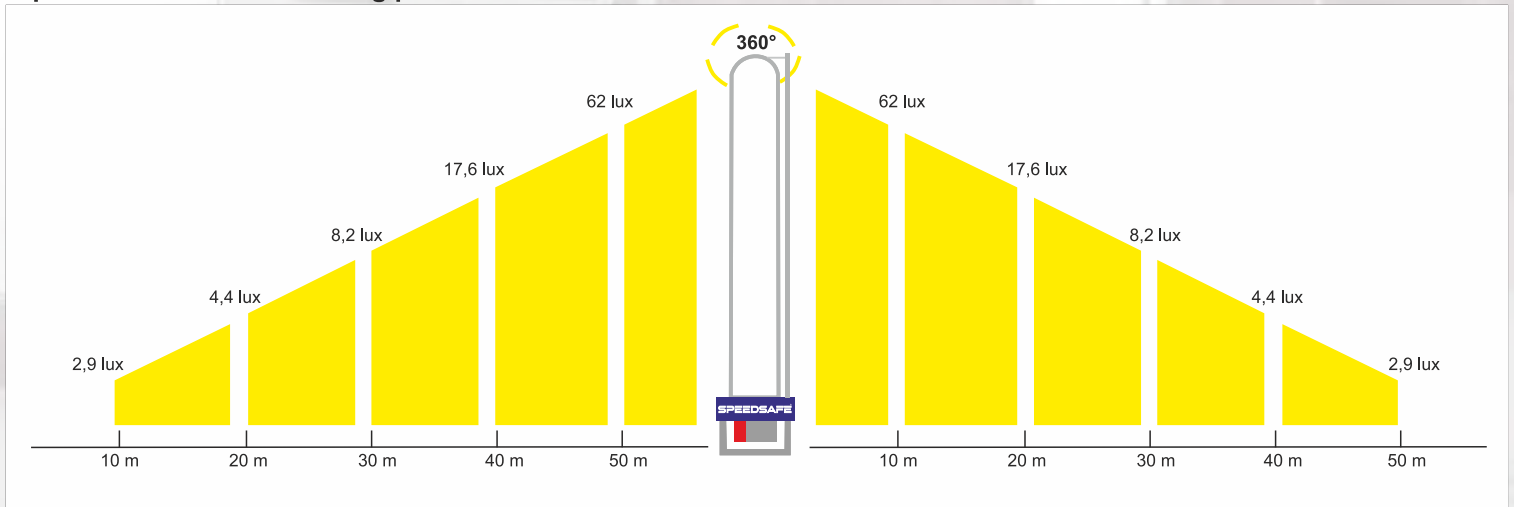
Speedsafe Tower in practice: Set up within 20 seconds!



The air hose is filled and straightened up by two powerful compressors and can be moved or carried on the transport cart to any place that requires lighting. This is also possible while in operation.



Speedsafe Tower Illuminating power



SPEEDSAFE®

Speedsafe Jürgen Fleischhauer
 Dechenstraße 29
 44147 Dortmund
 Tel.: +49(0) 231 / 728 02 43
 Fax: +49(0) 231 / 728 02 44
 info@speedsafe.de
 www.speedsafe.de

#As2023üpeng

SPEEDSAFE®